

PMLC

Medium voltage, mechanical aluminium lug for separable connector

Application

For Tee type separable connector, connection of copper cable, aluminium cable or aluminium alloy cable with aluminium end of electrical equipment in medium voltage.

Features

Material:

Body: high strength aluminium alloy

Bolts: brass or aluminium alloy

Surface: Tin plated

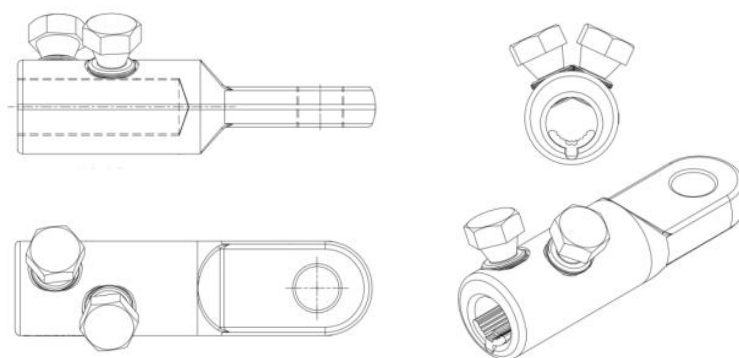
Centre palm

Prefilled with jointing compound

Wide application range

Standard: IEC 61238-1:2003

No needs of crimping tools but only a socket spanner or a wrench.



Dimensions

| Part. name | Conductor Size (mm ²) | Outer Diameter (mm) | Number of Bolts | Shear-off Torque (N·m) | Wrench size |
|------------------|-----------------------------------|---------------------|-----------------|------------------------|-------------|
| PMLC25-95-16/1 | 25-95 | 24 | 1 | 17 | 13 |
| PMLC35-150-16/1 | 70-240 | 29 | 1 | 31 | 17 |
| PMLC70-240-16/2 | 185-400 | 33 | 2 | 36 | 19 |
| PLMC120-300-16/2 | 120-300 | 38 | 2 | 40 | 22 |
| PMLC185-400-16/3 | 185-400 | 42 | 3 | 43 | 22 |
| PMLC300-630-16/3 | 300-630 | 52 | 3 | 56 | 24 |