

PSLX

Self-locking connector for pole-mounted overhead transformer

Application

For connection of pile head of pole-mounted overhead transformer in the transmission and distribution system



Features

- Silicon magnesium alloy suitable for copper and aluminum conductor
- Self locking, constant clamping force, free from maintenance.
- Large contact area with contactor, excellent overcurrent capacity
- Easy and fast installation, no additional training
- Clearly marking and different colors for phase identification

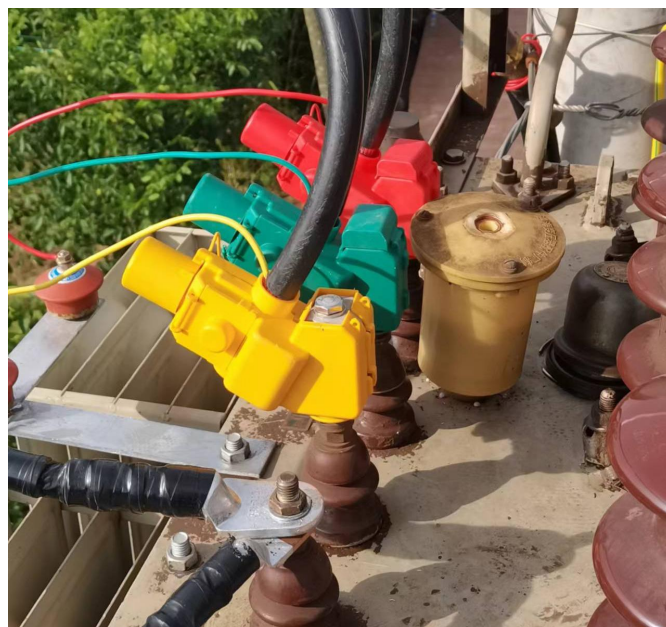


Typical technical performances

Test Items	Test Method	Typical Value
Appearance inspection		smooth, No cracks, lamination and peeling
Heat aging of insulation jacket	80℃ for 168hrs	No cracking, No breaking, No flashover mark
AC withstand of insulation jacket	50Hz, 18kV 1 Min	No flashover, No breakdown
DC resistance testing		≤1.1 resistant of same length cable conductor
Temperature-rise test		≤ the temp. of cable conductor in same condition
Salt fog test	5% NaCl, 30℃, 48hrs	No corrosion

Dimensions

Part name	Section of contactor (mm ²)	Unit	Colors	Application
PSLX-(M10-16)/(25-120)	M10-16/25-120	Kit	Black, Red, Green, Yellow	Angle pile head
PSLX-(M18-20)/(150-300)	M18-20/150-300	Kit	Black, Red, Green, Yellow	Angle pile head
PSLZ-(M10-16)/(25-120)	M10-16/25/120	Kit	Black, Red, Green, Yellow	Straight pile head
PSLZ-(M18-20)/(150-300)	M18-20/150-300	Kit	Black, Red, Green, Yellow	Straight pile head



Installation



1. Open the cap for screw, Loosen the screw and take off wedge taper



2. Tighten the wedge taper on the pile stud of transformer.
3. Position PLSX on wedge taper and tighten the screw for it, lock the cap.



4. Remove the insulation layer at the end of cable with suitable length.
5. Position prepared conductor into clamp of PLSX and tighten the screw and cover, wrap insulation tape at both ends of cable for waterproof.