

中国·广州·云浮

Yunfu · Guangzhou · China

番纜集團



番纜集團
PanyuCable

创百年企业 立国际品牌

Building a Century-old Enterprise Establishing an International Brand

广州番禺电缆集团有限公司
Guangzhou Panyu Cable Group Co., Ltd.

📍：广州市番禺区南村镇市新路北段280号
280 North Section of Shixin Road, Nancun Town, Panyu District, Guangzhou City

🌐：www.panyucable.cn
www.panyucable.com



番纜公眾號
Panyu Cable
Public Account



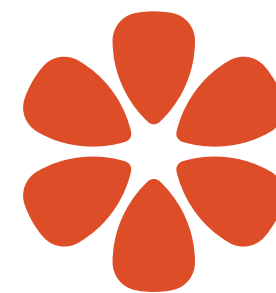
番纜網站
Panyu Cable
Website



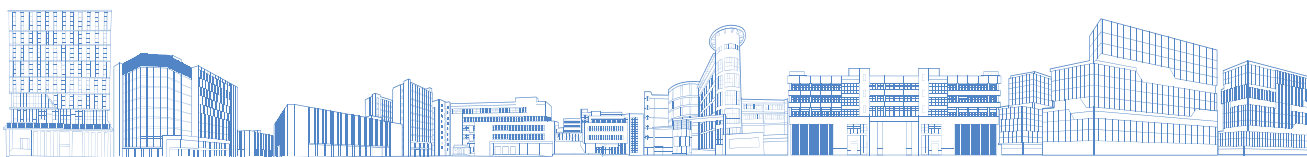
番纜招聘
Panyu Cable
Recruitment



番纜抖音
Panyu Cable
Tiktok



番纜集團
PanyuCable





番纜集團旗下公司

Panyu Cable's Subsidiaries

广州番禺电缆集团有限公司
Guangzhou Panyu Cable Group Co., Ltd.
☎：广州市番禺區南村鎮市新路北段280号
No. 280 North Section of Shixin Road, Nancun Town, Panyu District, Guangzhou City
🌐：www.panyucable.cn ☎：400-9099-668

广州和理新金属科技有限公司
Guangzhou Woli New Metal Technology Co., Ltd.
☎：广州市番禺區石基鎮蓮運一橫路16号(3号厂房)
No. 16 Liangyun 1st Cross Road, Shiji Town, Panyu District, Guangzhou City(Factory Building No. 3)
🌐：www.wolicable.com ☎：020-31160369

丰邦智造园
Full Point Maker Park
☎：广州市番禺區蓮運路一橫路16号
No. 16 Liangyun 1st Cross Road, Shiji Town, Panyu District, Guangzhou City
🌐：www.fullpointmaker.com ☎：020-39966668

广州龙基输配电设备有限公司
Guangzhou Longji Power Transmission and Distribution Equipment Co., Ltd.
☎：广州市番禺區石基鎮蓮運一橫路16号
No. 16 Liangyun 1st Cross Road, Shiji Town, Panyu District, Guangzhou City
🌐：http://www.gzlongji.com ☎：020-34834486

广州番禺电缆集团(新兴)有限公司
Guangzhou Panyu Cable Group (Xinxing) Co., Ltd.
☎：广东省云浮市新兴县新城鎮新成工业园XC07-05-03地块
The plot XC07-05-03 in Xincheng Industrial Park, Xincheng Town, Xinxing County, Yunfu City, Guangdong Province.
🌐：www.panyucable.cn ☎：0766-2297936

广州知崇新能源科技有限公司
Guangzhou Zeesung New Energy Technology Co., Ltd.
☎：广州市番禺區南村鎮西和路98号西区7栋
No. 7B, Xhe Road, Nancun Town, Panyu District, Guangzhou City.
🌐：www.zeesung.cn ☎：020-39116256

丰邦智创园
Full Point Innovation Park
☎：广州市番禺區南村鎮坑头村西和路98号
No. 98, Xhe Road, Nancun Town, Panyu District, Guangzhou City
🌐：www.fullpointmaker.com ☎：020-39998268





广州番禺电缆集团 Guangzhou Panyu Cable Group

广州番禺电缆集团(简称:番缆集团),创立于1969年,位于粤港澳大湾区的核心区域--广州市番禺区,是一家专业从事中低压输、配电装备产品领域,集研发、制造、销售与服务为一体的大型集团企业。番缆集团拥有国家高新技术企业、专精特新、国家知识产权优势企业和诚信立信示范企业等称号,位于“2024年中国线缆行业最具竞争力100强”前列,在通讯行业排列TOP3,创新能力及知识产权数量位居行业前列。

番缆集团拥有广东省企业技术中心、广东省配线路智能电缆及连接件工程技术研究中心和一个具有国家级(CNAS)认可实验室资质的检测中心。番缆集团旗下还拥有区域配送中心、两个产业园以及五家子公司。

产品主营包括35kV及以下输、配电产业全结构与组合产品,新型合金导体材料全结构特种电缆与组合产品,智能输配电产品,电力储能系统产品,新能源配套产品,电力金具系列产品等。产品广泛应用于通信、电力、新能源、工业、建筑、交通、船舶工业、军工等领域。

近年来,番缆集团在生产管理、实验室管理、人力资源、协同办公方面做了智能数字化管理建设,升级引入SAP ERP、MES、OA、HR等数字化系统,推动番缆集团产业高效、智能升级,为客户提供更优质的产品和服务。

目前,番缆集团现有员工约1200人,员工三成以上拥有大专以上学历,参与研发技术工作的员工占总人数三分之一,年均创新立项近30项,拥有专利超过1300项,其中授权专利768项,核心发明专利146项。番缆集团产品获得了中国CCC、欧盟CPR、德国VDE、北美UL&CUL、日本PSE、英国BSI、英国ASTA、泰国、韩国KC、澳大利亚NSW、澳大利亚SAA、阿根廷IRAM、巴西INMETRO、新加坡PSB等多个国家和地区的认证。

番缆集团与华为、南网、国网、美的等世界500强企业建立战略合作伙伴关系。同时积极参与港珠澳大桥、白云机场、广州地铁、成都地铁、长沙地铁、广州大学城、广州CBD商业中心、广州白云国际会议中心、广州LNG应急调峰气源站储气库、广州南沙新区大岗先进制造业基地等各项社会建设,以及参与“一带一路”沿线建设。

同时,作为新时代企业,番缆集团怀着强烈爱国情怀与社会责任,成立专项慈善公益基金,爱心资助助学,为贫困人员提供就业岗位,组织社会力最与员工共同参与敬老、无偿献血、关爱儿童、社会捐赠等社区活动,持续回馈社会。

Guangzhou Panyu Cable Group (Referred to as Panyu Cable Group), founded in 1969, is located in the core area of the Guangdong-Hong Kong-Macao Greater Bay Area - Panyu District, Guangzhou City. It is a large-scale group enterprise specializing in the field of medium and low-voltage transmission and distribution equipment products, integrating research and development, manufacturing, sales, and services. The group has been awarded titles such as National High-tech Enterprise, Specialized, Refined, Special and New Enterprise, National Intellectual Property Advantage Enterprise, and Integrity and Credit Demonstration Enterprise. It ranks among the "Top 100 Most Competitive Enterprises in China's Cable Industry in 2024" and is in the top three in the communication industry. Its innovation capabilities and the number of intellectual property rights rank at the forefront of the industry.

Panyu Cable Group has a Guangdong Provincial Enterprise Technology Center, Guangdong Provincial Distribution Line Intelligent Cable and Connector Engineering Technology Research Center, and a testing center with national-level accredited laboratory qualifications. The group also has a regional distribution center, two industrial parks, and five subsidiaries.

The main products include fully structured and composite products for 35kV and below transmission and distribution industries, new alloy conductor materials, fully structured special cables and composite products, intelligent transmission and distribution products, power storage system products, supporting products for new energy, and series of power fittings. The products are widely used in fields such as communication, power, new energy, industry, construction, transportation, shipbuilding, and military industries.

In recent years, the group has implemented intelligent digital management in production management, laboratory management, human resources, and collaborative office work. Upgrades have been made with the introduction of SAP ERP, MES, OA, HR, and other digital systems to promote the efficient and intelligent upgrading of the group's industries. This initiative aims to provide customers with higher quality products and services.

Currently, the group has approximately 1200 employees, with over 30% of them holding a college degree or higher. Employees engaged in research and development constitute one-third of the total workforce, with an average of nearly 30 innovative projects initiated each year. The group possesses over 1300 patents, including 768 authorized patents and 146 core invention patents. Its products have obtained certifications from various countries and regions including China CCC, EU CPR, Germany VDE, North America UL&CUL, Japan PSE, UK BSI, ASTA, Thailand, South Korea KC, Australia NSW, SAA, Argentina Iram, Brazil INMETRO, Singapore PSB, among others.

Panyu Cable Group has established strategic partnerships with world-renowned enterprises such as Huawei, State Grid Corporation of China, China Southern Power Grid, and Midea, all of which are among the Fortune Global 500 companies. Simultaneously, the group actively participates in various social construction projects, including the Hong Kong-Zhuhai-Macao Bridge, Baiyun Airport, Guangzhou Metro, Chengdu Metro, Changsha Metro, Guangzhou University City, Guangzhou CBD commercial center, Guangzhou Baiyun International Convention Center, Guangzhou LNG emergency peak-shaving gas source station and gas storage depot, as well as the advanced manufacturing base in Dagang, Nansha New Area, Guangzhou. It also engages in projects along the Belt and Road Initiative routes.

At the same time, as an enterprise in the new era, Panyu Cable Group has established a special charity fund with a strong sense of patriotism and social responsibility. It has provided financial aid for students and employment opportunities for the poor. It has also organized social forces and employees to participate in community activities such as respecting the elderly, blood donation, caring for children, and social donations, continuously giving back to society.

秉承产品至上,客户需求为本,专业专注的理念,在实现电缆行业现代化智能制造道路上大步迈进,数智化多维驱动,向“新”而行,以“质”致远,立志创造更高的价值,服务全球。

Panyu Cable Group upholds the philosophy of product excellence, customer-oriented service, and professional focus. It is making significant strides on the path of modernized and intelligent manufacturing in the cable industry, driven by multidimensional digital and intelligent technologies. With New Quality Productive Forces to foster development and a commitment to quality for long-term stability, the company is dedicated to creating greater value and serving the global market.

1995

企业开展配套产品业务,服务华为公司,至今已有30年。

In 1995, The company has been engaged in supporting product business and serving Huawei for 30 years.



2000

公司更名为广东省广州番禺电缆厂有限公司。

In 2000, The company was further renamed Guangdong Guangzhou Panyu Cable Factory Co., Ltd.



1998

公司由集体企业转为民营企业,公司命名为广东省番禺市电缆厂。

In 1998, The company was renamed Guangdong Panyu City Cable Factory.



1969

番禺县电缆厂成立。
In 1969, Panyu County Cable Factory was established.



2009

集团化经营模式开启,公司升级为广州番禺电缆集团有限公司。

In 2009, the group business model was launched and the company was upgraded to Guangzhou Panyu Cable Group Co., Ltd.



2003

公司引入现代企业经营模式,全方位提升经营管理效能。

In 2003, the company will introduce a modern enterprise management model to improve operation and management efficiency in all aspects.

2014

集团拓宽延展产业链,设立知崇新能源、和理新金属子公司。

In 2014, the group expanded its industrial chain and established Zeesung New Energy and Woli New Metal subsidiaries.



2017

集团多元化经营,石基丰邦智造产业园项目奠基。

In 2017, the group diversified its operations and laid the foundation stone for the Shiqi Full Point Maker Industrial Park project.



2022

- 丰邦智创园一期竣工,火热招商。二期高效投建。
- 知崇新能源子公司全盘升级,市场为本、管理卓越、科技领先。
- 广州番禺电缆集团(新兴)有限公司隆重开业,产能升级。

In 2022, the first phase of Full Point Innovation Industrial Park will be completed and investment is booming. The second phase of the industrial park was invested and constructed efficiently.

Zeesung New Energy subsidiary have been fully upgraded, market-oriented, with excellent management and leading technology.

Guangzhou Panyu Cable Group(Xinxing) Co.,Ltd grandly opened and its production capacity was upgraded.



2021

- 丰邦智创产业园区一期招商大捷,喜得不错招商成果,将进入二期建设。
- 新兴生产基地项目建设立项。

The first phase of the Full Point Innovation Industrial Park has achieved a great success in investment attraction, securing excellent results. With these positive investment outcomes, the project will proceed to the second phase of construction.

The establishment of the construction project for the Xinxing Production Base has been approved.



2023

- 丰邦智创产业园二期项目喜封金顶。
- 广州知崇新能源科技有限公司获评专精特新企业,产能升级,高质量发展。
- 新兴子公司生产基地特种智能电缆生产二期项目顺利奠基。

In 2023, The topping-out ceremony for the Full Point Innovation Industrial Park Phase II project has been successfully completed. Guangzhou Zeesung New Energy Technology Co., Ltd. has been recognized as a specialized new technology enterprise, upgrading its production capacity for high-quality development.

Guangzhou Panyu Cable Group(Xinxing) Co.,Ltd of the special intelligent cable manufacturing production of the second phase of the project successfully laid the foundation stone.



未来展望

不忘初心,守正创新,砥砺前行,在实现电缆行业现代化智能制造道路上大步迈进,立志创造更高的价值,服务全球。
In the future, we will not forget our original aspirations, stay true to our principles and innovate, forge ahead, and make great strides towards realizing modern intelligent manufacturing in the cable industry, determined to create higher value and serve the world.



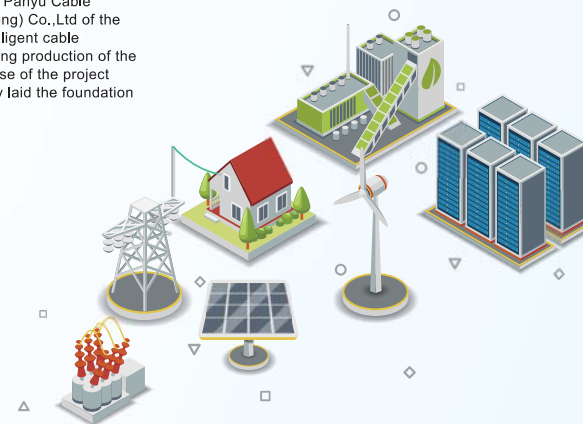
2024

- 丰邦智创园二期竣工,火热招商。
- 广州知崇新能源科技有限公司多个智慧快充电站隆重开业。
- 广州番禺电缆集团(新兴)有限公司特种智能电缆生产二期项目稳步建设。

Full Point Innovation Industrial Park Phase II project is completed and actively seeking investment.

Several smart fast-charging stations of Guangzhou Zeesung New Energy Technology Co., Ltd. have grandly opened.

The special intelligent cable production Phase II project of Guangzhou Panyu Cable Group (Xinxing) Co., Ltd. is steadily under construction.



<div>通讯技术</div> <div>Communication Technology</div>	<div></div> <div>HUAWEI</div>	<div></div> <div>ZTE中兴</div>	<div></div> <div>H3C 新华三集团</div>	<div></div> <div>中国电信 CHINA TELECOM</div>	<div></div> <div>中国移动 China Mobile</div>	<div></div> <div>China unicom中国联通</div>	<div></div> <div>ByteDance 字节跳动</div>	<div></div> <div>LUXSHARE ICT 光宝电子</div>	
<div>电网电力</div> <div>Electric Power Grid</div>	<div></div> <div>国家电网 STATE GRID</div>	<div></div> <div>中国南方电网 CHINA SOUTHERN POWER GRID</div>	<div></div> <div>中国华能 CHINA HUANENG</div>	<div></div> <div>中国国电 CHINA GUODIAN</div>	<div></div> <div>中国电建 POWERCHINA</div>				
<div>电器设备</div> <div>Electrical Equipment</div>	<div></div> <div>Panasonic 松下电器</div>	<div></div> <div>Midea 美的</div>	<div></div> <div>HIKVISION 海康威视</div>	<div></div> <div>GREE 格力</div>	<div></div> <div>MEIDA 美大集成灶</div>	<div></div> <div>JASIC佳士 暨中国厨具行业领军品牌</div>	<div></div> <div>Galanz 格兰仕</div>	<div></div> <div>Haier</div>	<div></div> <div>火星人集成灶</div>
<div>工程产业</div> <div>Engineering Industry</div>	<div></div> <div>广州城投 GUANGZHOU CITY INVESTMENT GROUP</div>	<div></div> <div>中国长江三峡 CHINA CHANGJIANG THREE GORGES</div>	<div></div> <div>珠江建设 ZHUJIANG CONSTRUCTION</div>	<div></div> <div>越秀地产 YUEXIU PROPERTY</div>	<div></div> <div>广州建筑 GUANGZHOU CONSTRUCTION</div>	<div></div> <div>中国建筑 CHINA CONSTRUCTION</div>	<div></div> <div>广州大学城 WWW.GZUC.NET</div>	<div></div> <div>广东省工程技术和应用研究院 GUANGDONG ENGINEERING AND TECHNOLOGY INSTITUTE</div>	
<div>能源交通</div> <div>Energy Transportation</div>	<div></div> <div>中国石油 CHINA PETROLEUM</div>	<div></div> <div>中国石化 SINOPEC</div>	<div></div> <div>广州地铁 Guangzhou Metro</div>	<div></div> <div>深圳地铁 SHENZHEN METRO</div>	<div></div> <div>中国中铁 CHINA RAILWAY GROUP</div>	<div></div> <div>中国铁建 CHINA RAILWAY CONSTRUCTION GROUP</div>	<div></div> <div>PCI佳都</div>		
<div>汽车行业</div> <div>Automobile Industry</div>	<div></div> <div>广汽集团 GAC GROUP</div>	<div></div> <div>BYD 比亚迪汽车</div>	<div></div> <div>BMW</div>	<div></div> <div>小鹏</div>	<div></div> <div>AION 埃安</div>	<div></div> <div>五菱汽车</div>	<div></div> <div>东风汽车 DONGFENG MOTOR</div>		
<div>新能源产业</div> <div>New Energy Industry</div>	<div></div> <div>LESSO 联塑</div>	<div></div> <div>英飞源技术 INFY POWER</div>	<div></div> <div>LINCHR 领克</div>	<div></div> <div>Winline Technology 永联科技</div>	<div></div> <div>KSTAR 科士达</div>	<div></div> <div>• APTIV •</div>	<div></div> <div>中航光电 JONHON</div>		

超 30 家世界、中国 500 强企业合作伙伴，至臻服务值得信赖。



合作案例

Collaboration Cases



广州地铁、重庆地铁、南京地铁项目
 Guangzhou metro, Chongqing metro, Nanjing metro Projects



港珠澳大桥项目
 Hong Kong-Zhuhai-Macao Bridge



广州LNG应急调峰气源站储气库二期工程项目
 Guangzhou LNG Emergency Peak Shaving Gas Source Station Gas Storage Phase II Project



海康威视电源线长期合作项目
 Hikvision power cord long-term cooperation project



广州白云国际会议中心二期项目
 Guangzhou Baiyun International Convention Center Phase II Project



华为新疆天山媒体云文化科技支撑基地项目
 Huawei Xinjiang Tianshan Media Cloud Culture and Technology Support Base Project



广州体育中心
 Guangzhou Sports Center



中国联通福建产业互联网科技园
 Fujian Industrial Internet Science and Technology Park of China Unicom



中石化项目
 Sinopec project



广州国际文化中心项目
 Guangzhou International Cultural Centre Project



阿联酋A100项目Hermes站点
 UAE A100 Project Hermes Site



琶洲二期项目
 Pazhou Phase II Project



广州南沙体育馆项目
 Guangzhou Nansha Gymnasium Project



广州大学城项目
 Guangzhou University Town Project



成都地铁19号线
 Chengdu Metro Line 19



四川省布拖县±800kV换流站
 ±800kV Converter Station in Butuo County, Sichuan Province



佳都科技长沙地铁合作项目
 Jiadu Technology Changsha Metro Cooperation Project



广州之窗项目
 Guangzhou Window Business Port Project



中铁海语熙岸住宅项目
 China Railway Haiyu Xi'an Residential Project



新疆哈密戈壁光伏发电项目
 Xinjiang Hami Gobi Desert Photovoltaic Power Generation Project



清远长隆国际森林度假区项目
 Qingyuan Chimeilong International Forest Resort Project



深圳太子湾项目
 Shenzhen PRINCE BAY Project



广州白云国际机场三期项目
 Guangzhou Baiyun International Airport Phase III Project



中海油项目
 CNOOC Project

番缆集团始终坚持自主创新，以人才驱动创新，以研发赋能产品，探索电力能源的更高效、可持续的输送利用方式，厚植输配电新质生产力，奏响高质量发展强音。
Panyu Cable Group has always adhered to independent innovation, driven by talent, empowered by research and development to explore more efficient and sustainable ways of transmitting and utilizing electric power, cultivating new productive forces in power transmission and distribution, and sounding the clarion call for high-quality development.



超1300项专利
研发成效显著
创新能力行业领先
Over 1300 patents
Outstanding R&D achievements
Leading innovation capabilities
in the industry

2大技术中心
省企业技术中心
省工程技术研发中心
2Major Technology Centers
Provincial Enterprise
Technology Center
Provincial Engineering
Technology Research Center

超300位研发人才
高达1/3员工参与创新研发
Over 300 R&D talents
Up to 1/3 employees
Engaged in innovative
research and development

长期与华为、南网和国网
共同研发多项科技创新项目
Long-term cooperation
with State Grid, Southern
Power Grid, Huawei
Jointly developing multiple
science and technology
innovation projects

企业荣誉 Patent Qualification

- 2024年度中国线缆产业最具竞争力百强企业
Top 100 Most Competitive Enterprises in China's Cable Industry in 2024
- 专精特新企业
Specialized and Innovative Enterprises
- 高新技术企业
High-Tech Enterprises
- 中国专利优秀奖
Excellent Award for Chinese Patents
- 国家知识产权优势企业
National Intellectual Property Advantage Enterprise
- 全国百佳质量诚信标杆企业奖
National Top 100 Honest and Quality Benchmark Enterprises Award
- 广东省知识产权示范企业
Guangdong Provincial Demonstration Enterprise in Intellectual Property Rights
- 广东省重点商标保护名录(乐光)奖
Guangdong Provincial Key Trademark Protection List (Lokwan) Award
- 广东省重点商标保护名录(番电)奖
Guangdong Provincial Key Trademark Protection List (PunDin) Award
- 广东省市场质量信用AAA级用户满意企业奖
Guangdong Provincial Market Quality Credit AAA-level Customer Satisfaction Enterprise Award
- 广东省配电网线路智能电缆及连接件工程技术研究中心
Guangdong Provincial Engineering Technology Research Center for Intelligent Cables and Connectors in Distribution Lines
- 华为碳减排优秀供应商奖
Huawei Excellent Supplier Award for Carbon Emission Reduction
- 华为质量优秀协作奖
Huawei Excellent Collaboration Award for Quality
- 华为质量提升奖
Huawei Quality Improvement Award
- 新华三优秀质量奖
Excellent Quality Award from New H3C
- ZTE中兴优秀质量表现奖
ZTE's Excellent Performance Award for Quality
- 中国建筑优秀合作伙伴奖
Excellent Partner Award from China Construction
- 立讯技术战略供应商奖
Strategic Supplier Award from Luxshare Technology
- 美的供应商优秀奖
Excellent Supplier Award from Midea
- 美大集成灶配套供应优秀品质奖
Excellent Quality Award for Supporting Products of Midea Integrated Stoves
- 艾默生优秀质量奖
Excellent Quality Award from Emerson
- 佳士科技供应商最佳质量奖
Best Quality Supplier Award from Jasic Technology
- 中交集团南方总部基地C区钢结构机电工程项目优秀供应商
Excellent Supplier for Steel Structure Mechanical and Electrical Engineering Projects in Zone C of the Southern Headquarters Base of China Communications Construction Group



“ 累计获得超过

400+

项国家级、省级、市级等企业荣誉
Accumulated over 400 national, provincial, and municipal
enterprise honors

”



集团及子公司主要产品介绍

Introduction to the main products of the group and its subsidiaries

01



铜芯交联聚乙烯绝缘聚氯乙烯护套耐火电力电缆

产品型号: N-YJV
导体材料: 铜
耐火材料: 云母带
绝缘材料: 交联聚乙烯/XLPE
护套材料: 阻燃聚氯乙烯
产品标准: GB/T12706.1-2020、GB/T19666-2019
产品应用: 产品主要适用于额定电压1kV及以下人口相对密集且阻燃燃烧等级较高的场所,如:地铁、机场、医院、超高层建筑、大型商场、酒店、会展中心、数据中心、交通枢纽等场所。
Copper Core Cross-linked Polyethylene Insulated Polyvinyl Chloride Sheathed Fire-resistant Power Cable
Product Model: N-YJV
Conductor Material: Copper
Fire-resistant Material: Mica Tape
Insulation Material: Cross-linked Polyethylene (XLPE)
Sheath Material: Flame Retardant Polyvinyl Chloride
Product Application: Suitable for transmission and distribution lines, power systems, industrial systems, new energy systems, building systems, airport infrastructure, petroleum, natural gas and chemical railway networks, wind power generation, docks, harbors, lighthouses, and other infrastructure with rated AC voltage of 0.6/1kV and below.

铜芯交联聚乙烯绝缘聚烯烃护套无卤低烟阻燃(A,B,C)类B1级不锈钢钢带铠装电力电缆

产品型号: WDJ(A、B、C)B1-YJY63
导体材料: 单根或多根铜丝绞合导体
绝缘材料: 交联聚乙烯/XLPE
铠装材料: 不锈钢钢带(1芯)
护套材料: 低烟无卤阻燃B1级聚烯烃
额定电压: U0/U为0.6/1kV
产品标准: GB/T19666-2019、GB T31247-2014、GB/T3956-2008、GB/T12706.1-2020
产品应用: 产品主要适用于额定电压1kV及以下人口相对密集且阻燃燃烧等级较高的场所,如:地铁、机场、医院、超高层建筑、大型商场、酒店、会展中心、数据中心、交通枢纽等场所。
Copper Core Cross-linked Polyethylene Insulated Polyolefin Sheathed Halogen-Free Low Smoke Flame Retardant (Class A, B, C) Type B1 Stainless Steel Tape Armored Power Cable
Product Model: WDJ(A, B, C)B1-YJY63
Conductor Material: Single or multiple copper wire stranded conductor
Insulation Material: Cross-linked Polyethylene (XLPE)
Armoring Material: Stainless steel tape (1 core)
Sheath Material: Low smoke halogen-free flame retardant B1 grade polyolefin
Rated Voltage: U0/U is 0.6/1kV
Product Standards: GB/T19666-2019, GB/T31247-2014, GB/T3956-2008, GB/T12706.1-2020
Product Application: The product is mainly suitable for places with a rated voltage of 1kV and below, where the population density is relatively high and flame retardant rating is high, such as subways, airports, hospitals, high-rise buildings, large shopping malls, hotels, exhibition centers, data centers, and transportation hubs.

02



03



铜芯聚氯乙烯绝缘聚氯乙烯护套控制电缆

产品型号: KVV/Z(A、B、C)-KVV
导体材料: 铜
绝缘材料: 聚氯乙烯/阻燃聚氯乙烯
护套材料: 聚氯乙烯/阻燃聚氯乙烯
产品认证: 全国工业产品生产许可证
产品标准: GB/T 9330-2020
产品应用: 产品主要为电气配电线路设计与交流额定电压450/750V情况下使用:电力系统、工业系统、新能源系统、楼宇建筑系统、机场基础设施、石油天然气及化工、铁路网络、风力发电、码头、港湾、灯塔等基建。
Copper Core Polyvinyl Chloride Insulated Polyvinyl Chloride Sheathed Control Cable
Product Model: KVV/Z(A, B, C)-KVV
Conductor Material: Copper
Insulation Material: Polyvinyl Chloride / Flame Retardant Polyvinyl Chloride
Sheath Material: Polyvinyl Chloride / Flame Retardant Polyvinyl Chloride
Product Certification: National Industrial Product Production License
Product Standard: GB/T9330-2020
Product Application: The product is mainly designed for electrical distribution circuits and used under AC rated voltage of 450/750V, including power systems, industrial systems, new energy systems, building systems, airport infrastructure, petroleum, natural gas and chemical industries, railway networks, wind power generation, docks, harbors, lighthouses, and other infrastructure projects.

05



铝合金芯交联聚乙烯绝缘聚氯乙烯护套(阻燃)电力电缆

产品型号: (ZA、ZB、ZC)-YJLHV
导体材料: 铝合金
绝缘材料: 交联聚乙烯/XLPE
护套材料: 聚氯乙烯
额定电压: 0.6/1kV
产品标准: GB/T 31840.1-2015
产品应用: 产品主要为电气配电线路设计与交流额定电压0.6/1kV情况下使用:电力系统、工业系统、新能源系统、楼宇建筑系统、机场基础设施、石油天然气及化工、铁路网络、风力发电、码头、港湾、灯塔等基建。
Aluminum Alloy Core Cross-linked Polyethylene Insulated Polyvinyl Chloride Sheathed (Flame Retardant) Power Cable
Product Model: (ZA, ZB, ZC)-YJLHV
Conductor Material: Aluminum Alloy
Insulation Material: Cross-linked Polyethylene (XLPE)
Sheath Material: Polyvinyl Chloride (PVC)
Rated Voltage: 0.6/1kV
Product Standard: GB/T12706.1-2020
Product Application: The product is primarily designed for electrical distribution circuits and used under AC rated voltage of 0.6/1kV, including power systems, industrial systems, new energy systems, building systems, airport infrastructure, petroleum, natural gas and chemical industries, railway networks, wind power generation, docks, harbors, lighthouses, and other infrastructure projects.

06



铜芯交联聚乙烯绝缘聚烯烃护套无卤低烟阻燃(A、B、C)类耐火B1级不锈钢钢带铠装电力电缆

产品型号: WDJ(A、B、C)NB1-YJY63
导体材料: 单根或多根铜丝绞合导体
绝缘材料: 交联聚乙烯/XLPE
铠装材料: 不锈钢钢带
护套材料: 低烟无卤阻燃B1级聚烯烃
额定电压: U0/U为0.6/1kV
产品标准: GB/T19666-2019、GB T31247-2014、GB/T3956-2008、GB/T12706.1-2020
产品应用: 产品主要适用于额定电压1kV及以下人口相对密集且阻燃燃烧等级较高的场所,如:地铁、机场、医院、超高层建筑、大型商场、酒店、会展中心、数据中心、交通枢纽等场所。
Copper Core Cross-linked Polyethylene Insulated Polyolefin Sheathed, Halogen-Free, Low Smoke Flame Retardant (Class A, B, C), Fire-resistant B1 Grade Stainless Steel Tape Armored Power Cable
Product Model: WDJ(A, B, C)NB1-YJY63
Conductor Material: Single or multiple copper wire stranded conductor
Insulation Material: Cross-linked Polyethylene (XLPE)
Armoring Material: Stainless steel tape
Sheath Material: Low smoke halogen-free flame retardant B1 grade polyolefin
Rated Voltage: U0/U is 0.6/1kV
Product Standards: GB/T19666-2019, GBT31247-2014, GB/T3956-2008, GB/T12706.1-2020
Product Application: The product is primarily suitable for places with a rated voltage of 1kV and below, where the population density is relatively high and the flame retardant rating is high, such as subways, airports, hospitals, high-rise buildings, large shopping malls, hotels, exhibition centers, data centers, and transportation hubs.



集团及子公司主要产品介绍

Introduction to the main products of the group and its subsidiaries

07



一般用途单芯硬导体无护套电缆

产品型号: 60227 IEC 01 (BV)
导体材料: 铜
绝缘材料: 聚氯乙烯/PVC
产品认证: CCC、CE
产品标准: GB/T5023.3-2008/IEC 60227-3:1997
产品应用: 产品主要为电气配电线路设计与交流额定电压300/500V情况下使用: 电力系统, 工业系统, 新能源系统, 楼宇建筑系统, 机场基础设施, 石油天然气及化工, 铁路网络, 风力发电, 码头、港湾、灯塔等基建。

General Purposes Single-Core Rigid Conductor Non-Sheathed Cable

Product Model: 60227 IEC 01 (BV)
Conductor Material: Copper
Insulation Material: Polyvinyl Chloride (PVC)
Product Certification: CCC, CE
Product Standard: GB/T5023.3-2008 / IEC 60227-3:1997
Product Application: The products are mainly designed for electrical distribution lines and use under AC rated voltage of 300/500V: power systems, industrial systems, new energy systems, building systems, airport infrastructure, oil and gas and chemical industries, railway networks, wind power generation, docks, harbors, light towers and other infrastructure.

铜芯聚氯乙烯绝缘软电缆

产品型号: BVR
导体材料: 铜
绝缘材料: 聚氯乙烯/PVC
产品认证: CCC
产品标准: JB/T 8734.2-2016
产品应用: 产品主要为电气配电线路设计与交流额定电压450/750V情况下使用: 电力系统, 工业系统, 新能源系统, 楼宇建筑系统, 机场基础设施, 石油天然气及化工, 铁路网络, 风力发电, 码头、港湾、灯塔等基建。

Copper Core Polyvinyl Chloride Insulated Flexible Cable

Product Model: BVR
Conductor Material: Copper
Insulation Material: Polyvinyl Chloride (PVC)
Product Certification: CCC
Product Standard: JB/T 8734.2-2016
Product Application: Mainly used for power distribution line design and in AC rated voltage 450/750V situations: power systems, industrial systems, new energy systems, building construction systems, airport infrastructure, oil and gas and chemical industries, railway networks, wind power generation, docks, ports, lighthouses, and other infrastructures.

09



轻型聚氯乙烯护套软线

产品型号: 60227 IEC 52 (RVV)
导体材料: 铜
绝缘材料: 聚氯乙烯/PVC
护套材料: 聚氯乙烯/PVC
产品认证: CCC、CE
产品标准: GB/T 5023.5-2008/IEC 60227-5:2003
产品应用: 产品主要为电气配电线路设计与交流额定电压300/300V情况下使用: 电力系统, 工业系统, 新能源系统, 楼宇建筑系统, 机场基础设施, 石油天然气及化、铁路网络、风力发电、安防系统、码头、港湾、灯塔等基建。

Light Polyvinyl Chloride Sheathed Flexible Wire

Product Model: 60227 IEC 52 (RVV)
Conductor Material: Copper
Insulation Material: Polyvinyl Chloride (PVC)
Sheath Material: Polyvinyl Chloride (PVC)
Product Certification: CCC, CE
Product Standard: GB/T5023.5-2008 / IEC 60227-5:2003
Product Application: Mainly used for power distribution line design and in AC rated voltage 300/300V situations: power systems, industrial systems, new energy systems, building construction systems, airport infrastructure, oil and gas and chemical industries, railway networks, wind power generation, security systems, docks, ports, lighthouses, and other infrastructures.

08



铝芯聚氯乙烯绝缘电缆

型号规格: BLV
额定电压: 450/750V
导体材料: 铝
绝缘材料: 聚氯乙烯/PVC
护套材料: /
产品认证: CCC
执行标准: JB/T 8734.2-2016
产品应用: BLV电缆是一种铝芯电线, 其绝缘层由聚氯乙烯材料制成。这种电缆的特点包括良好的电气绝缘性能、耐油性能、抗酸碱性能; 产品主要为电气配电线路设计与交流额定电压 450/750V 情况下使用: 它适用于日常使用的家用电器和照明, 电力系统, 工业系统, 新能源系统, 楼宇建筑系统, 机场基础设施, 石油天然气及化工, 铁路网络, 风力发电, 码头、港湾、灯塔等基建。

Aluminum Core Polyvinyl Chloride Insulated Cable

Model Specification: BLV
Rated Voltage: 450/750V
Conductor Material: Aluminum
Insulation Material: Polyvinyl Chloride (PVC)
Sheath Material: /
Product Certification: CCC
Implementation Standard: JB/T 8734.2-2016
Product Application: BLV cable is an aluminum-core wire with a PVC insulation layer. Features include good electrical insulation, oil resistance, and acid-alkali resistance. Mainly used for power distribution line design and in AC rated voltage 450/750V situations. Suitable for daily use in household appliances and lighting, as well as in power systems, industrial systems, new energy systems, building construction systems, airport infrastructure, oil and gas and chemical industries, railway networks, wind power generation, docks, ports, lighthouses, and other infrastructures.

10



交联聚乙烯绝缘架空电缆

型号规格: JKLYJ
额定电压: 1kV
导体材料: 铝
绝缘材料: 交联聚乙烯
护套材料: /
执行标准: GB/T 14049-2008
产品应用: 架空绝缘电缆是装有绝缘层和保护外皮的架空导线, 采用类似于交联电缆生产工艺制造的一种专用电缆, 是介于架空导线和地下电缆之间的新的输电方式, 既具有电力电缆的输送电能特性, 又具有架空电缆较强的机械性能, 与裸电线相比, 具有敷设间距小、安全可靠性能高、耐大气老化性能优良等特点。
产品主要适用于多树木地方、多飞飘金属灰尘及多污染、盐雾地区、雷电较多的区域, 适用于旧城区改造, 有利于防台风

Product Name: Cross-Linked Polyethylene Insulated Aerial Cable

Model Specification: JKLYJ
Rated Voltage: 1kV
Conductor Material: Aluminum
Insulation Material: Cross-Linked Polyethylene
Sheath Material: /
Implementation Standard: GB/T 14049-2008
Usage and Features: Overhead insulated cable is an overhead conductor with an insulation layer and protective sheath, manufactured using a production process similar to that of cross-linked cables. It is a new transmission method that lies between overhead conductors and underground cables. It has the power transmission characteristics of power cables and the mechanical properties of overhead cables. Compared with bare wires, it has small laying distance, high safety and reliability, excellent resistance to atmospheric aging, and other features.
Application scenarios: Suitable for areas with many trees, areas with flying metal dust and pollution, salt spray areas, areas with frequent lightning, old city renovation, Beneficial for typhoon prevention.

11





集团及子公司主要产品介绍

Introduction to the main products of the group and its subsidiaries

12



铜芯铝金属套聚烯烃护套隔离型(柔性)矿物绝缘电缆

产品型号: NG-A(BTLY)

导体材料: 铜

绝缘材料: 云母带矿物绝缘

金属套材料: 铝金属套

护套材料: 聚乙烯/聚烯烃

额定电压: 0.6/1kV

产品标准: Q/PLJT10-2022

产品应用: 适用于交流额定电压0.6/1kV及以下的输电线路, 如: 1. 公共建筑(医院、娱乐场所、商场、酒店、学校)。2. 高温场所(钢铁冶炼厂、玻璃工业、船舶制造)。3. 人流密集的場所(地铁、办公大楼、高层建筑)。4. 危化品场所(炼油厂、加油站、核电站、天然气等危化品场所)。

Copper Core Aluminum Metal Clad Polyolefin Sheathed Isolated (Flexible) Mineral Insulated Cable

Product Model: NG-A(BTLY)

Conductor Material: Copper

Insulation Material: Mica-tape Mineral Insulation

Metal Clad Material: Aluminum Metal Clad

Sheath Material: Polyethylene/Polyolefin

Rated Voltage: 0.6/1kV

Product Standard: Q/PLJT10-2022

Product Application: Suitable for AC rated voltage of 0.6/1kV and below for transmission and distribution lines, such as:

1. Public buildings (hospitals, entertainment venues, shopping malls, hotels, schools).

2. High-temperature environments (steel smelting plants, glass industries, shipbuilding).

3. Places with high human traffic (subways, office buildings, high-rise buildings).

4. Hazardous chemical places (refineries, gas stations, nuclear power plants, places with hazardous chemicals such as natural gas).

光伏电缆

产品型号: H1Z2Z2-K、62930 IEC 131、PV1-F

导体材质: 镀锡铜

绝缘及护套材质: 阻燃低烟无卤聚烯烃

额定电压: DC 1.5kV, AC 0.6/1kV

产品标准: 2PFG 1169、EN 50618、IEC 62930

直流电缆: 组件与组件之间的串联电缆; 组串之间及其组串至直流配电箱(汇流箱)之间的并联电缆; 直流配电箱至逆变器之间电缆。2. 交流电缆: 逆变器至升压变压器的连接电缆; 升压变压器至配电装置的连接电缆; 配电装置至电网或用户的连接电缆。

Photovoltaic Cable

Product Model: H1Z2Z2-K, 62930 IEC 131, PV1-F

Conductor Material: Tinned Copper

Insulation and Sheath Material: Flame Retardant

Low Smoke Zero Halogen Polyolefin

Rated Voltage: DC 1.5kV, AC 0.6/1kV

Product Standards: 2PFG 1169, EN 50618, IEC 62930

Product Application:

1. DC cables: Series cables between modules; parallel cables between strings and between strings and DC distribution boxes (junction boxes); cables from DC distribution boxes to inverters.

2. AC cables: Cables connecting inverters to step-up transformers; cables connecting step-up transformers to distribution devices; cables connecting distribution devices to the grid or users.

13



液冷充电枪及液冷线缆

额定工作电流: 400A/500A/600A

额定工作电压: 750V/1000VDC

绝缘电阻: $\geq 500\text{M}\Omega$ (DC 1000V)

介电强度: 3500V AC 漏电流 $\leq 5\text{mA}$

端子温升: $< 50\text{K}$

机械寿命: > 10000 次

插拔力: $< 140\text{N}$

线缆固定拉脱力: $> 500\text{N}$

工作环境温度: $-30\sim 50^\circ\text{C}$

胶壳阻燃等级: UL94 V-0

防护等级: IP55工作状态, 枪体IP67

产品设计依据: GB/T 20234.1/3-2023

Liquid Cooled Charging Gun and Liquid Cooled Cable

Rated Working Current: 400A/500A/600A

Rated Working Voltage: 750V/1000VDC

Insulation Resistance: $\geq 100\text{M}\Omega$ (DC1000V)

Dielectric Strength: 3500VAC Leakage Current $\leq 10\text{mA}$

Terminal Temperature Rise: 10000 times

Insertion and Extraction Force: 250N

Operating Ambient Temperature: -40°C to $+55^\circ\text{C}$

Flame Retardant Rating of Rubber Shell: UL94 V-0

Protection Level: IP55 in working condition

Product Design Basis: GB/T 20234.1, GB/T 20234.3

14



15



小直流充电枪

额定电流: 20A/32A/63A/80A

额定电压: 750V/1000VDC

绝缘电阻: $\geq 500\text{M}\Omega$ (DC 1000V)

端子温升: $< 50\text{K}$

机械寿命: > 10000 次

插拔力: $< 140\text{N}$

线缆固定拉脱力: $> 250\text{N}$

工作环境温度: $-30^\circ\text{C}\sim +50^\circ\text{C}$

胶壳阻燃等级: UL94 V-0

防护等级: 工作状态IP55, 枪体IP67

产品设计依据: GB/T 20234.1/3-2023

Small DC Charging Gun

Rated Current: 20A/32A/63A/80A

Rated Voltage: 750V/1000VDC

Insulation Resistance: $\geq 2000\text{M}\Omega$

Terminal Temperature Rise: 10000 times

Insertion and Extraction Force: 250N

Operating Ambient Temperature: -40°C to $+55^\circ\text{C}$

Flame Retardant Rating of Rubber Shell: UL94 V-0

Protection Level: IP55 in working condition, IP67 for the gun body

Product Design Basis: GB/T 20234.1/3

直流充电枪及线缆

额定工作电流: 80A/125A/200A/250A

额定工作电压: 750V/1000VDC

绝缘电阻: 绝缘电阻 $\geq 500\text{M}\Omega$ (DC 1000V)

介电强度: 3500V AC 漏电流 $\leq 5\text{mA}$

机械寿命: > 10000 次

工作环境温度: $-30^\circ\text{C}\sim +50^\circ\text{C}$

产品设计依据: GB/T 20234.1/3-2015

Direct Current Charging Gun and Cable

Rated Working Current: 80A/125A/200A/250A

Rated Working Voltage: 750V/1000VDC

Insulation Resistance: Insulation Resistance $\geq 2000\text{M}\Omega$ (DC1000V)

Dielectric Strength: 3500VAC Leakage Current $\leq 10\text{mA}$

Mechanical Life: ≥ 10000 times

Operating Ambient Temperature: -40°C to $+55^\circ\text{C}$

Product Design Basis: GB/T 20234.1, GB/T 20234.3



16

17



欧标双头枪

额定工作电流: 13A/20A/32A

额定工作电压: 单项250V AC/三相480VAC

绝缘电阻: $\geq 500\text{M}\Omega$ (DC1000V)

介电强度: 2500V AC 漏电流 $\leq 5\text{mA}$

线缆固定拉脱力: $> 200\text{N}$

工作环境温度: $-40^\circ\text{C}\sim +55^\circ\text{C}$

胶壳阻燃等级: UL94 V-0

防护等级: IP55工作状态, 枪体IP67

机械寿命: > 10000 次

产品设计依据: IEC 62196-1、IEC 62196-2

Direct Current Charging Gun and Cable

Rated Working Current: 80A/125A/200A/250A

Rated Working Voltage: 750V/1000VDC

Insulation Resistance: Insulation Resistance $\geq 2000\text{M}\Omega$ (DC1000V)

Dielectric Strength: 3500VAC Leakage Current $\leq 10\text{mA}$

Mechanical Life: ≥ 10000 times

Operating Ambient Temperature: -40°C to $+55^\circ\text{C}$

Product Design Basis: GB/T 20234.1, GB/T 20234.3



集团及子公司主要产品介绍

Introduction to the main products of the group and its subsidiaries

18



硅橡胶、TPE高压线缆

产品型号: QZJP2-D/XLPO、FHLRLPOCBXLPO

导体材料: 第五类、第六类软导体

绝缘材料: XLPE

额定电压: AC 1000V/DC 1500V

产品标准: GB/T25085、QC/T1037、ISO6722、LV216

产品应用: 道路车辆用高压屏蔽线缆参考GB/T25085、QC/T1037、ISO6722、LV216标准, 拥有较强的耐高低温、抗阻燃、抗老化的特点, 最小弯曲半径一般可达到 $4 \times OD @ < 20mm$ 、 $6 \times OD @ > 20mm$, 可在 $150^{\circ}C$ 高温环境运营4小时不击穿并达到ROSH&REACH的环保要求。

Silicone Rubber, TPE High Voltage Cables

Product Models: QZJP2-D/XLPO, FHLRLPOCBXLPO

Conductor Material: Fifth Class, Sixth Class Flexible Conductors

Insulation Material: XLPE

Rated Voltage: AC 1000V/DC 1500V

Product Standards: GB/T25085, QC/T1037, ISO6722, LV216

Product Application: High-voltage shielded cables for road vehicles, reference GB/T25085, QC/T1037, ISO6722, LV216 standards. They have strong characteristics of high and low temperature resistance, flame retardancy, and aging resistance. The minimum bending radius can generally reach $4OD @ \leq 20mm$, $6OD @ > 20mm$. They can operate in a $150^{\circ}C$ high-temperature environment for 4 hours without breakdown, and meet the environmental protection requirements of ROHS & REACH.

交流充电枪

额定电流: 10A/16A/32A

额定电压: 250/440V AC

绝缘电阻: $\geq 1000M\Omega$ (DC500V)

端子温升: $< 50K$

机械寿命: > 10000 次

插拔力: $< 100N$

线缆固定拉力: $> 250N$

工作环境温度: $-40^{\circ}C \sim +55^{\circ}C$

胶壳阻燃等级: UL94 V-0

防护等级: 工作状态IP55, 枪体IP67

产品设计依据: GB/T 20234.1/2

AC Charging Gun

Rated Current: 16A/32A

Rated Voltage: 250VAC

Insulation Resistance: $\geq 1000M\Omega$ (DC500V)

Terminal Temperature Rise: 10000 times

Insertion and Extraction Force: 200N

Operating Ambient Temperature: $-40^{\circ}C$ to $+55^{\circ}C$

Flame Retardant Rating of Rubber Shell: UL94 V-0

Protection Level: IP55 in working condition, IP67 for the gun body

Product Design Basis: GB/T 20234.1/3



19

交直流一体式、分体式车辆插座

额定工作电流: 32A (交流)、

125A/200A/250A (直流)

额定工作电压: 250V AC (交流)、

750/1000V DC (直流)

绝缘电阻: $> 100M\Omega$ (DC1000V)

介电强度: 2500V AC 漏电流 $\leq 5mA$ (交流)、

3500V AC 漏电流 $\leq 10mA$ (直流)

端子温升: $< 50K$ (直流、交流)

机械寿命: > 10000 次 (直流、交流)

插拔力: $< 100N$ (交流)、 $< 140N$ (直流)

工作环境温度: $-30^{\circ}C \sim +50^{\circ}C$

胶壳阻燃等级: UL94 V-0

防护等级: IP55 (工作状态)、IP67 (壳体)

Integrated AC/DC Charging Socket and Wiring Harness

Rated Working Current: 16A/32A/63A (DC),

80A/125A/200A/250A/300A (AC)

Rated Working Voltage: 250V/440VAC (DC),

750/1000V DC (AC)

Insulation Resistance: $\geq 1000M\Omega$ (DC500V) (DC),

$\geq 1000M\Omega$ (DC1000V) (AC)

Dielectric Strength: 2500VAC Leakage Current $\leq 5mA$ (DC),

3500VAC Leakage Current $\leq 10mA$ (AC)

Terminal Temperature Rise: 10000 times (DC, AC)

Insertion and Extraction Force: $< 100N$ (DC), $< 140N$ (AC)

Operating Ambient Temperature: $-40^{\circ}C$ to $+55^{\circ}C$ (DC, AC)

Flame Retardant Rating of Rubber Shell: UL94 V-0 (DC, AC)

Protection Level: IP55 in working condition (DC, AC)

20



21

台架组合件 Rack assembly

终端封堵器
Terminal Sealing Plug



第一段引接线
Primary Lead-in Wire



第二段引接线
Secondary Lead-in Wire



通用连接装置
Universal Connector



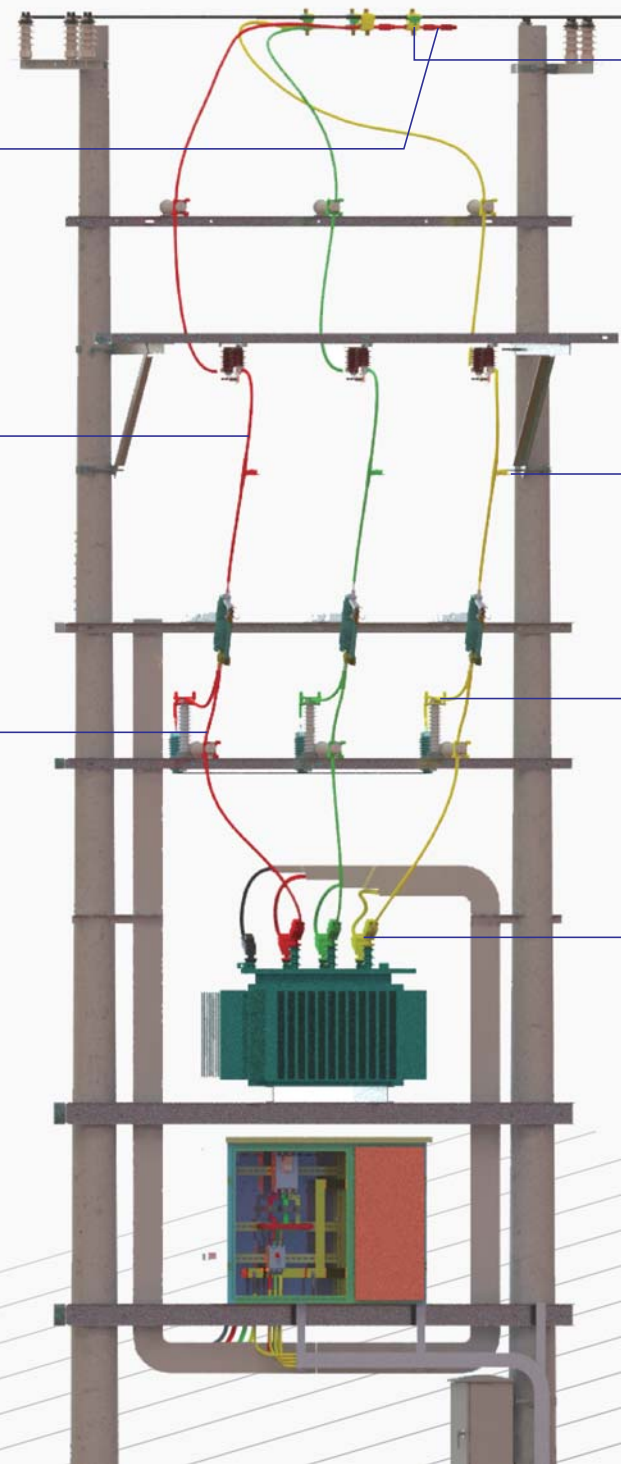
接地装置
Grounding device



紧线器
Tension Clamp



自锁端头连接装置
Self-locking Terminal Connector





集团及子公司主要产品介绍

Introduction to the main products of the group and its subsidiaries

22

低压防倒供电装置

产品型号: FD-16/150、FD-150/300

使用客户: 南网/国网

应用场景: 适用于低压线路的预装接地装置

低压防倒供电装置优点

1. 使用操作方便, 打开绝缘罩, 即可安装接地线, 使用完毕可快速恢复绝缘状态;
2. 保持绝缘防止用电公共安全事故发生;
3. 安装方便快捷, 只需电工刀、5分钟即可完成安装;
4. 过流能力强, 装置配备高导电能力的导电金箔;
5. 通用性强, 仅2个规格, 选型方便。

Low-Voltage Anti-Reversal Power Supply Device

Product Model: FD-16/150, FD-150/300

Target Customers: China Southern Power Grid / State Grid Corporation of China

Application Scenarios: Suitable for pre-installed grounding devices in low-voltage lines

Advantages of Low-Voltage Anti-Reversal Power Supply Device:

1. Easy to use and operate. Simply open the insulation cover to install the grounding wire, and the insulation can be quickly restored after use.
2. Maintains insulation to prevent public safety accidents related to electricity.
3. Convenient and quick installation, requiring only an electrician's knife and taking only 5 minutes to complete.
4. Strong overcurrent capability, equipped with highly conductive gold foil for efficient conductivity.
5. Universal applicability with only 2 specifications, making it easy to select the appropriate model.

24

复合材料街码

产品型号: FHQ-2(全能型)、FHQ-4(全能型)

使用客户: 南网/国网

应用场景: 适用于低压线路的沿墙或沿杆敷设的支撑固定

复合材料街码优点:

1. 全绝缘设计, 避免因电缆破或其他原因导致的漏电隐患;
2. 适用各种场合, 可高低跳线, 可过管障, 可转弯转角;
3. 预留增容扩容空间, 多回路可同时固线;
4. 绝缘子可防拉爆, 拉力可达30000N;
5. 绝缘子可滑动, 安装后拉线方便快捷且不损伤导线。

Composite Material Street Clamp

Product Models: FHQ-2 (Universal Type), FHQ-4 (Universal Type)

Target Customers: China Southern Power Grid / State Grid Corporation of China

Application Scenarios: Suitable for supporting and fixing low-voltage lines along walls or poles

Advantages of Composite Material Street Clamp:

1. Fully insulated design to prevent potential leakage caused by cable damage or other reasons.
2. Versatile for various scenarios, allowing for high and low jumper connections, crossing obstacles, and making turns and corners.
3. Provides space for capacity expansion, allowing multiple circuits to be fixed simultaneously.
4. Insulators prevent tension rupture, with a pulling force up to 30,000N.
5. Insulators are slidable, facilitating quick and convenient wire pulling after installation without damaging the conductors.

23

紧线器

产品型号: JDG-10/120(终端型)、JDG-150/300(终端型)

JZG-10/120(中间型)、JZG-150/300(中间型)

使用客户: 南网/国网

应用场景: 适用于10kV及以下架空线的安装固定

紧线器优点

1. 全绝缘设计, 避免因电缆破损或其他原因导致的漏电隐患;
2. 固线稳固, 夹紧力强, 可防抗风抗冰防松脱;
3. 通用性强, 选型方便, 适用市面上全部绝缘的固线;
4. 预制件, 配备安装工具, 安装快捷方便提升施工效率;
5. 根据导线颜色分色分相, 标准美观。

Tensioner

Product Models: JDG-10/120 (Terminal Type), JDG-150/300 (Terminal Type), JZG-10/120 (Intermediate Type), JZG-150/300 (Intermediate Type)

Target Customers: China Southern Power Grid / State Grid Corporation of China

Application Scenarios: Suitable for installation and fixation of 10kV and lower overhead lines

Advantages of Tensioner:

1. Fully insulated design to prevent potential leakage caused by cable damage or other reasons.
2. Strong clamping force ensures stability and resistance to wind, ice, and loosening.
3. Highly versatile with convenient model selection, suitable for all insulated lines available on the market.
4. Prefabricated with installation tools, providing quick and easy installation to improve construction efficiency.
5. Color-coded and phase-separated according to conductor colors, achieving standardization and aesthetics.

22



23



24



25

超能分流装置

产品型号: JCN-(16-120)/(4-16)

JCN-(150-300)/(4-16)

JCN-(25-120)/(25-70)

JCN-(150-300)/(25-70)

使用客户: 南网/国网

应用场景: 适用于10kV及以下架空线路

的T接与分流连接

超能分流装置优点

1. 产品通用性强, 4个型号可通用300平方以下所有导线接续;
2. 采用特殊合金材料, 可解决铜铝过渡问题;
3. 与导线接触面积大, 载流能力强;
4. 产品具有自锁功能, 防松脱免维护;
5. 根据导线颜色分色分相, 标准美观。

Super Power Distribution Device

Product Models: JCN-(16-120)/(4-16), JCN-(150-300)/(4-16),

JCN-(25-120)/(25-70), JCN-(150-300)/(25-70)

Target Customers: China Southern Power Grid / State Grid Corporation of China

Application Scenarios: Suitable for T-connection and distribution connection of 10kV and lower overhead lines

Advantages of Super Power Distribution Device:

1. Highly versatile, with 4 models capable of connecting all conductors under 300 square millimeters.
2. Uses special alloy material to address copper-to-aluminum transition issues.
3. Large contact area with conductors for strong current-carrying capacity.
4. Self-locking function prevents loosening and requires no maintenance.
5. Color-coded and phase-separated according to conductor colors, achieving standardization and aesthetics.

27

通用连接装置

产品型号: JT-20-(6-70)/(6-70)

JT-21-(6-70)/(16-120)

JT-22-(16-120)/(16-120)

JT-23-(16-120)/(120-300)

JT-24-(120-300)/(120-300)

使用客户: 南网/国网

应用场景: 适用于10kV及以下架空线路的

接续与分流(跳线)连接

通用连接装置优点

1. 产品通用性强, 型号可通用300平方以下所有导线接续;
2. 采用特殊合金材料, 可解决铜铝过渡问题;
3. 与导线接触面积大, 载流能力强;
4. 产品具有自锁功能, 防松脱免维护;
5. 根据导线颜色分色分相, 标准美观。

Universal Connection Device

Product Models:

JT-20-(6-70)/(6-70)

JT-21-(6-70)/(16-120)

JT-22-(16-120)/(16-120)

JT-23-(16-120)/(120-300)

JT-24-(120-300)/(120-300)

Target Customers: China Southern Power Grid / State Grid Corporation of China

Application Scenarios: Suitable for continuation and distribution (jumper)

connections of 10kV and lower overhead lines

Advantages of Universal Connection Device:

1. Highly versatile, with models capable of connecting all conductors under 300 square millimeters.
2. Uses special alloy material to address copper-to-aluminum transition issues.
3. Large contact area with conductors ensures strong current-carrying capacity.
4. Self-locking function prevents loosening, requiring no maintenance.
5. Color-coded and phase-separated according to conductor colors, achieving standardization and aesthetics.

26

计量接引装置

产品型号: JZ-(6-25)/(10-120)

JZ-(6-25)/(150-300)

JZ-(35-70)/(35-120)

JZ-(35-70)/(150-300)

使用客户: 南网/国网

应用场景: 适用于低压线路电表引下线的T接口

计量接引装置优点

1. 产品通用性强, 型号可通用300平方以下所有导线接续;
2. 采用特殊合金材料, 可解决铜铝过渡问题;
3. 与导线接触面积大, 载流能力强;
4. 产品具有自锁功能, 防松脱免维护;
5. 根据导线颜色分色分相, 标准美观。

Meter Connection Device

Product Models:

JZ-(6-25)/(10-120)

JZ-(6-25)/(150-300)

JZ-(35-70)/(35-120)

JZ-(35-70)/(150-300)

Target Customers: China Southern Power Grid / State Grid Corporation of China

Application Scenarios: Suitable for T-connection of low-voltage line meter down leads

Advantages of Meter Connection Device:

1. Highly versatile, with models capable of connecting all conductors under 300 square millimeters.
2. Uses special alloy material to address copper-to-aluminum transition issues.
3. Large contact area with conductors ensures strong current-carrying capacity.
4. Self-locking function prevents loosening, requiring no maintenance.
5. Color-coded and phase-separated according to conductor colors, achieving standardization and aesthetics.

25



26



27





集团及子公司主要产品介绍

Introduction to the main products of the group and its subsidiaries

28



镀锡铜线

产品规格: 0.050-0.400mm

电压等级: 电阻率: GB/4909-2009 $\leq 0.018510\Omega\text{mm}^2$

产品标准: 参照GB/T4909-2009或根据客户要求执行

产品应用: 本产品适用于拉制圆铜线或直接生产电缆导体

Tinned Copper Wire

Product Specifications: 0.050-0.099/0.100-0.159/0.160-0.249/
0.250-0.499/0.450-1.00

Voltage Grade: Resistance Rate: GB/4909-2009 $\leq 0.018510\Omega\text{mm}^2$

Product Standard: Refer to GB/T4909-2009 or execute according to
customer requirements

Product Application: This product is suitable for drawing round
copper wire or directly producing cable conductors.

裸铜线软圆铜线

产品规格: 0.050-2.720mm

电压等级: 电阻率: GB/4909-2009 $\leq 0.017241\Omega\text{mm}^2$

产品标准: 参照GB/T4909-2009或根据客户要求执行

产品应用: 本产品适用于拉制圆铜线或直接生产电缆导体

Bare Copper Wire Soft Round Copper Wire

Product Specifications: 0.050-0.099/0.100-0.159/0.160-0.249/
0.250-0.499/0.450-1.00

Voltage Grade: Resistance Rate: GB/4909-2009 $\leq 0.017241\Omega\text{mm}^2$

Product Standard: Refer to GB/T4909-2009 or execute according to
customer requirements

Product Application: This product is suitable for drawing round
copper wire or directly producing cable conductors.

29



30



铜包铝合金镀锡线

产品规格: 0.080-0.099/0.100-0.159/0.160-0.249/0.250-0.600mm

电压等级: 电阻率: GB/4909-2009 $\leq 0.02700\Omega\text{mm}^2$

产品标准: 参照SJ/T11223-2000或根据客户要求执行

产品应用: 本产品适用于拉制圆铜线或直接生产电缆导体

Copper-Clad Aluminum Alloy Tin-Plated Wire

Product Specifications:

0.080-0.099/0.100-0.159/0.160-0.249/0.250-0.600

Voltage Grade: Resistance Rate: GB/4909-2009 $\leq 0.02700\Omega\text{mm}^2$

Product Standard: Refer to SJ/T11223-2000 or execute according to
customer requirements

Product Application: This product is suitable for drawing round
copper wire or directly producing cable conductors.

铜包铝合金裸线

产品规格: 0.080-0.099/0.100-0.159/0.160-0.249/0.250-0.600mm

产品标准: 参照SJ/T11223-2000或根据客户要求执行

产品应用: 本产品适用于拉制圆铜线或直接生产电缆导体

Copper-Clad Aluminum Alloy Bare Wire

Product Specifications:

0.080-0.099/0.100-0.159/0.160-0.249/0.250-0.600

Product Standard: Refer to SJ/T11223-2000 or execute according to
customer requirements

Product Application: This product is suitable for drawing round
copper wire or directly producing cable conductors.

31



番缆集团拥有一个具有国家级认可实验室资质的检测中心,由专业检测工程师铸就的品控团队对标华为、中兴检测标准,严选材料供应商,严格控制产品出厂质量,以匠心“质”造为用电安全保驾护航。

The group has a testing center with a nationally recognized (CNAS) accredited laboratory qualification. The quality control team, forged by professional testing engineers, adheres to Huawei and ZTE's testing standards, selects materials suppliers rigorously, and strictly controls the quality of products leaving the factory, ensuring electric safety with ingenuity and "quality" craftsmanship.

121台
121 units

超100台先进设备测试项目覆盖98%以上
Over 100 advanced equipment Testing projects coverage rate of over 98%

多重守护质量保障

Multiple Layers of Quality Protection

3大权威认证

3 major authoritative certifications

检测和校准实验室认可准则、质量管理体系认证、测量管理体系认证
Over 100 advanced equipment Testing projects coverage rate of over 98%

89项
89 Items

近90项检测工序层层把关质量
Nearly 90 Inspection Processes Ensure Quality At Every Step.

6+6

6S+6SIGMA 专业质量管理
6S+6SIGMA Professional Quality Management

番缆集团检测中心于2012年成为CNAS认可实验室,持续认可至今,检测能力强大,测试项目覆盖98%以上,配备超100台先进设备,分别有GCMS-QP2010 SE气相色谱质谱联用仪、TGA2热重分析仪、DSC3差热分析仪、ALPHA红外图谱测试仪、EDX2800能量色散荧光光谱仪、电缆结构全自动测量系统、程式恒温恒湿试验箱等。

Panyu Cable Group Testing Center became a CNAS accredited laboratory in 2012, and has maintained accreditation to this day. With strong testing capabilities, it covers over 98% of testing items and is equipped with over 100 advanced instruments, including the GCMS-QP2010 SE Gas Chromatography Mass Spectrometer, TGA2 Thermal Gravimetric Analyzer, DSC3 Differential Scanning Calorimeter, ALPHA Infrared Spectroscopy Tester, EDX2800 Energy Dispersive X-ray Fluorescence Spectrometer, fully automatic cable structure measurement system, and programmable constant temperature and humidity test chambers, among others.



DSC3差热分析仪
DSC3 Differential Scanning Calorimeter



GCMS-QP2010 SE气相色谱质谱联用仪
GCMS-QP2010 SE Gas Chromatography Mass Spectrometry (GC-MS) Instrument



电缆结构全自动测量系统
Automatic Cable Structure Measurement System



ALPHA红外图谱测试仪
ALPHA Infrared Spectrum Analyzer



TGA2热重分析仪
TGA2 Thermal Gravimetric Analyzer



EDX2800能量色散荧光光谱仪
EDX2800 Energy Dispersive X-ray Fluorescence Spectrometer



丰邦智创园, 打造高标准厂房, 致力于成为“时尚产业+智能生产+智慧办公”的行业标杆智慧型园区, 项目总用地面积为57,566平方米, 总计容建筑面积为23万平方, 总投资10亿多元, 预测总年产值达30亿元。项目一期已入驻90%以上, 二期项目全国火热招商中。

Full Point Innovation Park, dedicated to creating high-standard factory buildings, aims to become a benchmark intelligent park in the industry, focusing on "fashion industry + intelligent manufacturing + smart office." The project covers a total land area of 57,566 square meters, with a total planned construction area of 230,000 square meters. With a total investment of over one billion yuan, it is projected to achieve an annual output value of RMB 3 billion. Phase I of the project is over 90% occupied, and Phase II is currently under active nationwide recruitment for investment.

入驻企业

Resident Enterprises



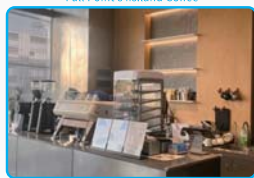
招商中心

Investment Promotion Center Presentation Center



丰邦de iis:land coffee

Full Point's iis:land Coffee



路演中心

Roadshow Center



丰邦智创园公众号

Full Point Innovation Official Account

020-39998268

广东省广州市番禺区南村镇西和路98号
No. 98, Xihe Road, Nancun Town, Panyu District, Guangzhou City

丰邦智造园, 建设高标准厂房, 致力打造智能制造、电商物流、研发办公的高端智慧型产业园, 项目总规划面积为24,541平方米, 总建筑面积为74,252平方米, 总投资约8亿元, 预估年产值15亿元, 入驻率已达96%, 还剩少量场地, 火热招商中。

Full Point Maker Park, dedicated to constructing high-standard factory buildings, is committed to creating a high-end intelligent industrial park focusing on intelligent manufacturing, e-commerce logistics, and research and development offices. The project has a total planned area of 24,541 square meters, with a total construction area of 74,252 square meters. With an estimated investment of approximately 800 million yuan, it is projected to achieve an annual output value of 1.5 billion yuan and is warmly inviting investment.

入驻企业

Resident Enterprises



全家便利店

FamilyMart Convenience Store



LOFT公寓

LOFT Apartments



新能源充电桩

Charging pile for new energy

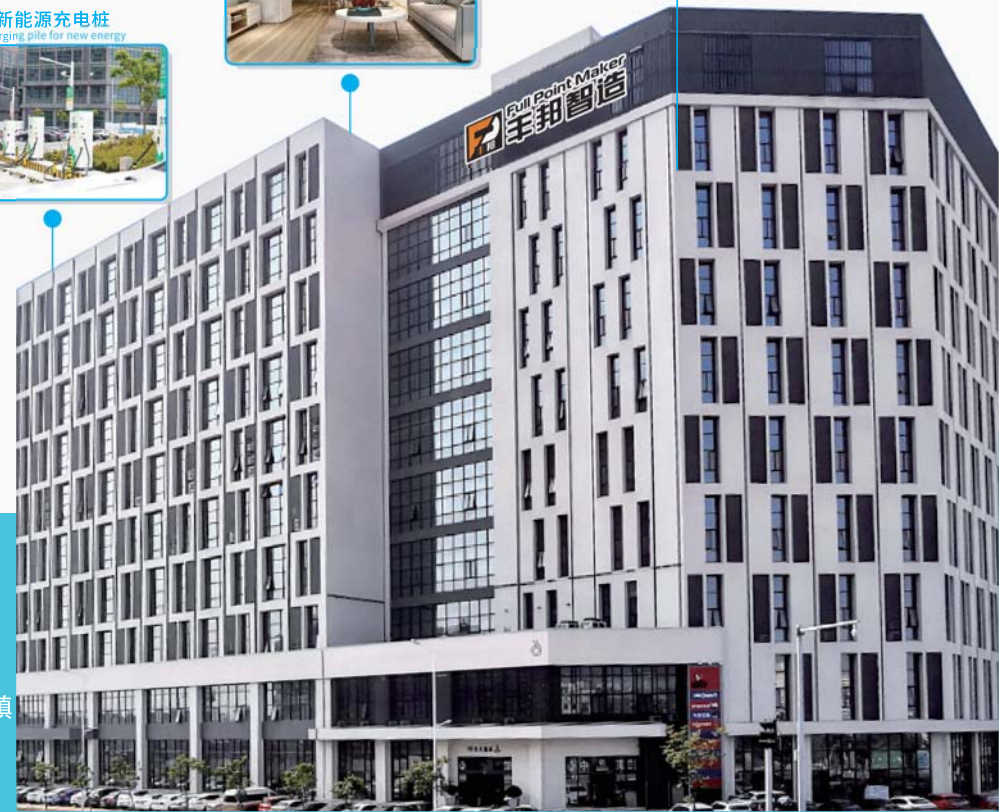


丰邦智造园公众号

Full Point Maker Official Account

020-39966668

广东省广州市番禺区石基镇莲运一横路16号
No.16, Lianyun 1st Cross Road, Shiji Town, Panyu District, Guangzhou City



立足广东，融入湾区，放眼全球。番缆集团紧跟“十四五”规划步伐，夯实“**制造业当家**”的根基，深耕电线电缆及电力附件制造，以创新提质构建输配电新质生产力，为客户提供更加专业、高质量的一站式输配电解决方案。

番缆集团坚持“**以客户至上，质量为本，诚信为先，创新引领**”的经营理念，致力为广大客户创造更多价值，向着实现“**创百年企业 立国际品牌**”愿景目标扬帆奋进。期待与您携手前行，共创共赢，助力国家高质量发展！

Rooted in Guangdong, integrated into the Greater Bay Area, and with a global vision, Panyu Cable Group closely follows the pace of the "14th Five-Year Plan", reinforcing the foundation of "**manufacturing as the cornerstone**." We specialize in the production of wires, cables, and power accessories, leveraging innovation to enhance production quality and build new productivity in power transmission and distribution. Our goal is to provide customers with more professional and high-quality one-stop power transmission and distribution solutions.

Panyu Cable Group adheres to the business philosophy of "**customer first, quality as the foundation, integrity foremost, and innovation-driven**." We are committed to creating more value for our customers, advancing towards the vision of "**establishing a century-old enterprise and an international brand**." We look forward to working hand in hand with you to create mutual success and contribute to the high-quality development of the country



化龙生产基地

Hualong Production Base



新兴生产基地

Xinxing Production Base



知崇子公司

Zeesung Subsidiary



和理子公司

Woli Subsidiary



丰邦智创园

Full Point Innovation Park



丰邦智造园

Full Point Maker Park